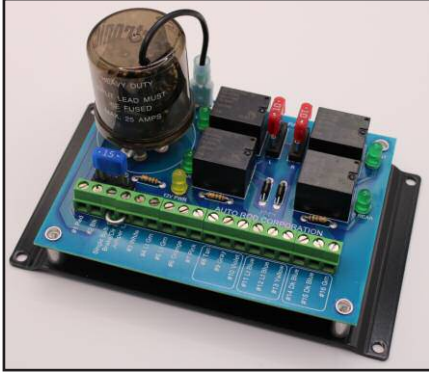




TSM-1 Wiring



The **TSM-1** from *AutoRod Corporation* allows easy wiring of turn signals, hazard lights and brake lights all from one compact module. It will work with taillight lenses that have a single bulb for brake lights and turn signals or with taillight lenses that have a separate amber bulb for turn signals. It is compatible with LED or incandescent bulbs and has individual fuses for left and right. All wiring is color coded and printed with each function for easy installation. There is a 12V power LED and separate L and R indicator leds on the board for easy troubleshooting.

The Silver jumper is for setting single bulb or separate bulb operation



Single bulb taillights use the same bulb filament for brake and directionals. When the brake and turn signal are on together the turn signal will override the brake lamp. **Connect the silver jumper for single bulb taillights and use only the Green and Yellow wires to the rear bulbs. The light green wires are not used on these tail lamp lenses.**



Separate bulb taillights use a separate bulb for turn signals and a separate bulb for brake lamps. **Remove the silver jumper for separate bulb taillights. The light green wires will go to the brake lamp bulbs and the green and yellow wires will go to the directional bulbs.**



This unit is 16 Volt Compatible

www.AutoRod.net

Tech Support: 732-851-5095 or 774-417-6542

Troubleshooting

1. Flasher clicks but bulbs and leds on the board do not flash: Check L and R fuses.
2. Brake lights do not work: Make sure the jumper is installed if single bulb tail lamps. Check 12V input on brake switch. Brake lamp switch is fed by main fuse, check the main fuse.
3. 12V Power LED does not light up: check 12V fuse, make sure terminal #2 (black wire) is connected to a good Ground

Wire Chart

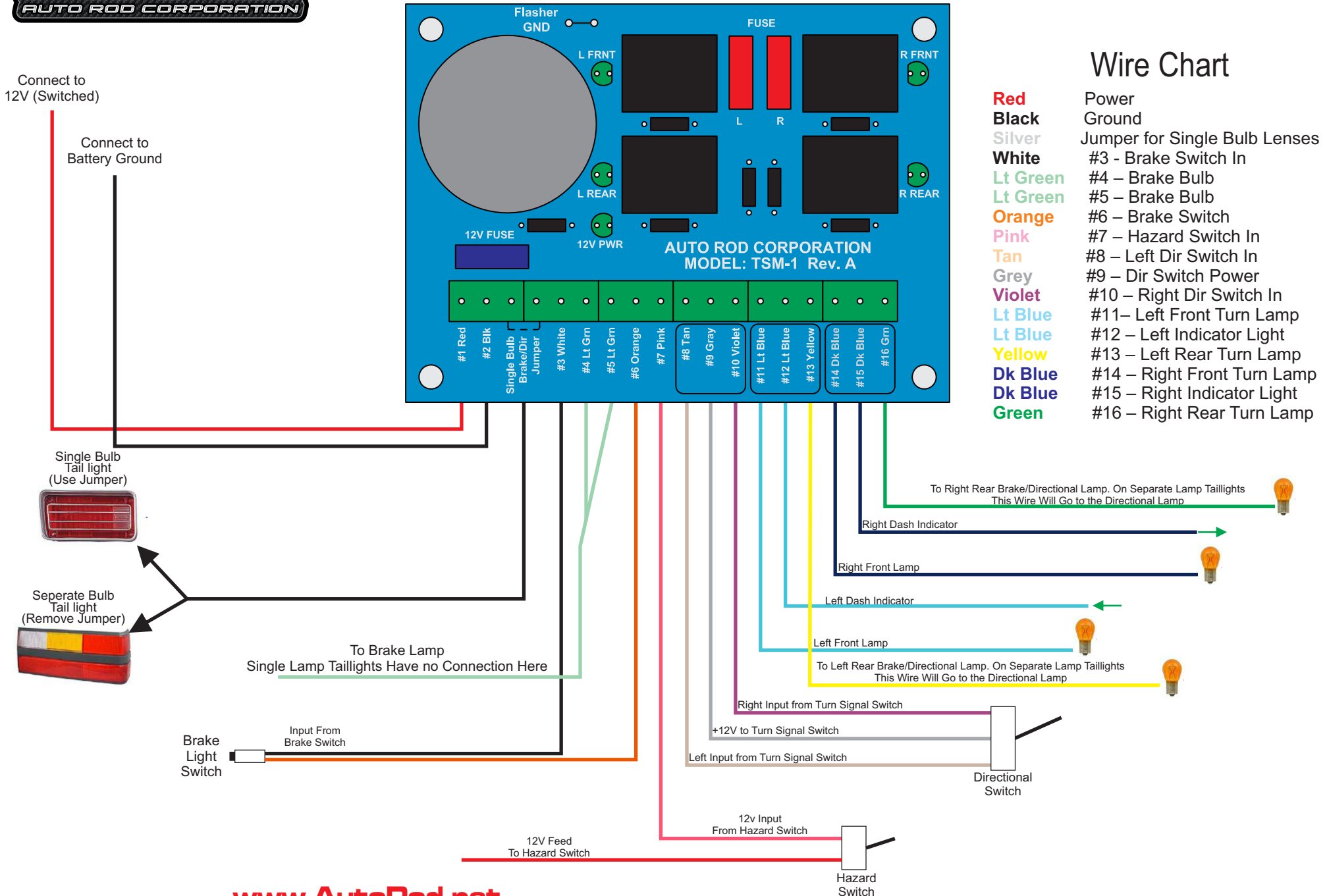
Red	Power
Black	Ground
Silver	Jumper for Single Bulb Lenses
White	#3 - Brake Switch In
Lt Green	#4 – Brake Bulb
Lt Green	#5 – Brake Bulb
Orange	#6 – Brake Switch
Pink	#7 – Hazard Switch In
Tan	#8 – Left Dir Switch In
Grey	#9 – Dir Switch Power
Violet	#10 – Right Dir Switch In
Lt Blue	#11– Left Front Turn Lamp
Lt Blue	#12 – Left Indicator Light
Yellow	#13 – Left Rear Turn Lamp
Dk Blue	#14 – Right Front Turn Lamp
Dk Blue	#15 – Right Indicator Light
Green	#16 – Right Rear Turn Lamp

www.AutoRod.net

Tech Support: 732-851-5095 or 774-417-6542



TSM-1 Wiring



Wire Chart

Red	Power
Black	Ground
Silver	Jumper for Single Bulb Lenses
White	#3 - Brake Switch In
Lt Green	#4 - Brake Bulb
Lt Green	#5 - Brake Bulb
Orange	#6 - Brake Switch
Pink	#7 - Hazard Switch In
Tan	#8 - Left Dir Switch In
Grey	#9 - Dir Switch Power
Violet	#10 - Right Dir Switch In
Lt Blue	#11 - Left Front Turn Lamp
Lt Blue	#12 - Left Indicator Light
Yellow	#13 - Left Rear Turn Lamp
Dk Blue	#14 - Right Front Turn Lamp
Dk Blue	#15 - Right Indicator Light
Green	#16 - Right Rear Turn Lamp

www.AutoRod.net

Tech Support: 732-851-5095 or 774-417-6542